






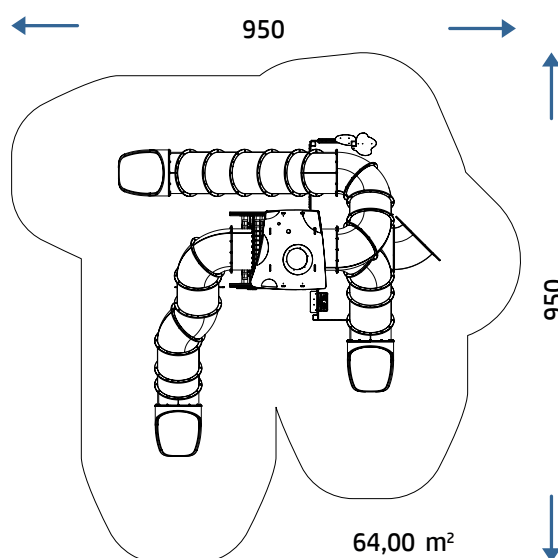
## PRODUCT SHEET

## 0980 STEROPES JACK



	CATALOG COLLECTION	TITAN COLLECTION
	<b>DIMENSIONS (L X W X H)</b>	600x595x585 cm
	<b>IMPACT AREA</b>	33,00 m <sup>2</sup>
	<b>MAXIMUM CFH</b>	150 cm
	<b>SUGGESTED AGE OF USE</b>	3+
	<b>NUMBER OF USERS</b>	40

### SECURITY AREA



## PRODUCT SHEET

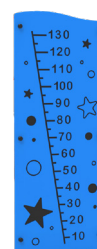
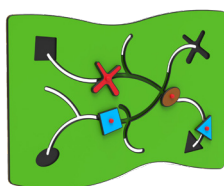
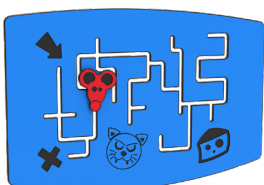
## 0980 STEROPES JACK

REV 0.0 - IT202509

### COMPOSITION

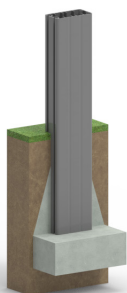
- n°4 rectangular aluminium posts 70x130mm
- n°5 aluminium load-bearing poles with square section 90x90mm
- n°3 non-slip aluminium decks with powder coated steel frame
- n°1 climbing ladders in powder coated steel
- n°2 HDPE climbing
- n°14 powder coated steel barriers
- n°8 HDPE barriers 15 mm thickness
- n°3 tube slides
- n°1 HDPE roof 15 mm thicknes
- n°1 tube consisting of two curves 45°

### PANNELLI GIOCO



MUSIC PLAY PANEL X1 EDUCATIONAL PLAY PANEL X1 EDUCATIONAL PLAY PANEL X1 LUDIC PLAY PANEL X1 EDUCATIONAL PLAY PANEL X1

### INSTALLATION



Where there is an aluminum pole, the plinth must be created directly on it.

Make a proper security surface according to CFH. Periodic maintenance is mandatory, following manual supplied to customer.

MATERIAL (mm)	DESCRIPTION (mm)	PROFONDITÀ MINIMA (mm) (b)	ALTEZZA MASSIMA DI CADUTA (mm)
LAWN/SOIL			1000 (d)
BARK	20 TO 80 GRAIN SIZE	200 300	2000 3000
WOOD CHIPS	20 TO 80 GRAIN SIZE	200 300	2000 3000
SAND	20 TO 80 GRAIN SIZE	200 300	2000 3000
GRAVEL	20 TO 80 GRAIN SIZE	200 300	2000 3000
RUBBER SURFACING RESPONDENT TO HIC	THICKNESS 30 MM		DEPENDING ON CERTIFICATION TESTS 1000
	THICKNESS 40 MM		1300
	THICKNESS 45 MM		1500
	THICKNESS 60 MM		2000
	THICKNESS 70 MM		2500
	THICKNESS 90 MM		3000